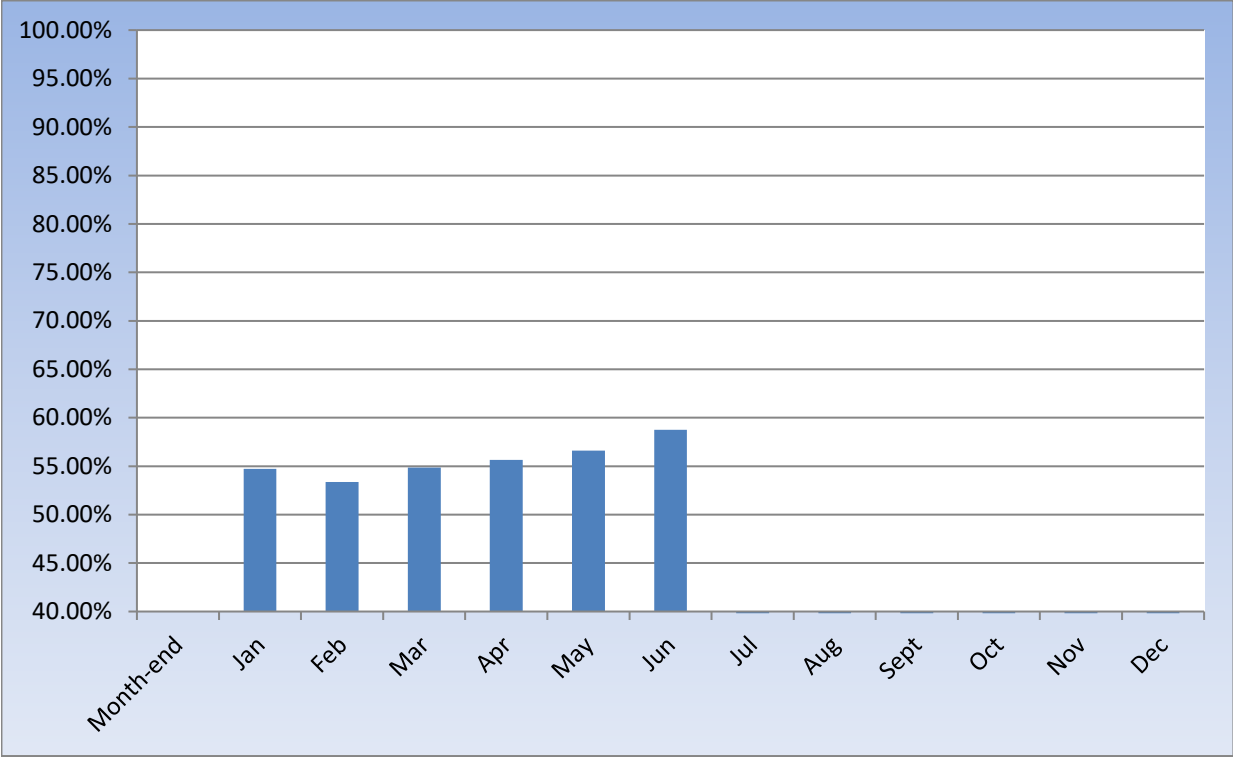


# CENTURY BANK AND TRUST

## Loan to Deposit Ratio - 2024



<u>Month-end</u>	
Jan	54.72%
Feb	53.36%
Mar	54.86%
Apr	55.65%
May	56.59%
Jun	58.76%
Jul	0.00%
Aug	0.00%
Sept	0.00%
Oct	0.00%
Nov	0.00%
Dec	0.00%